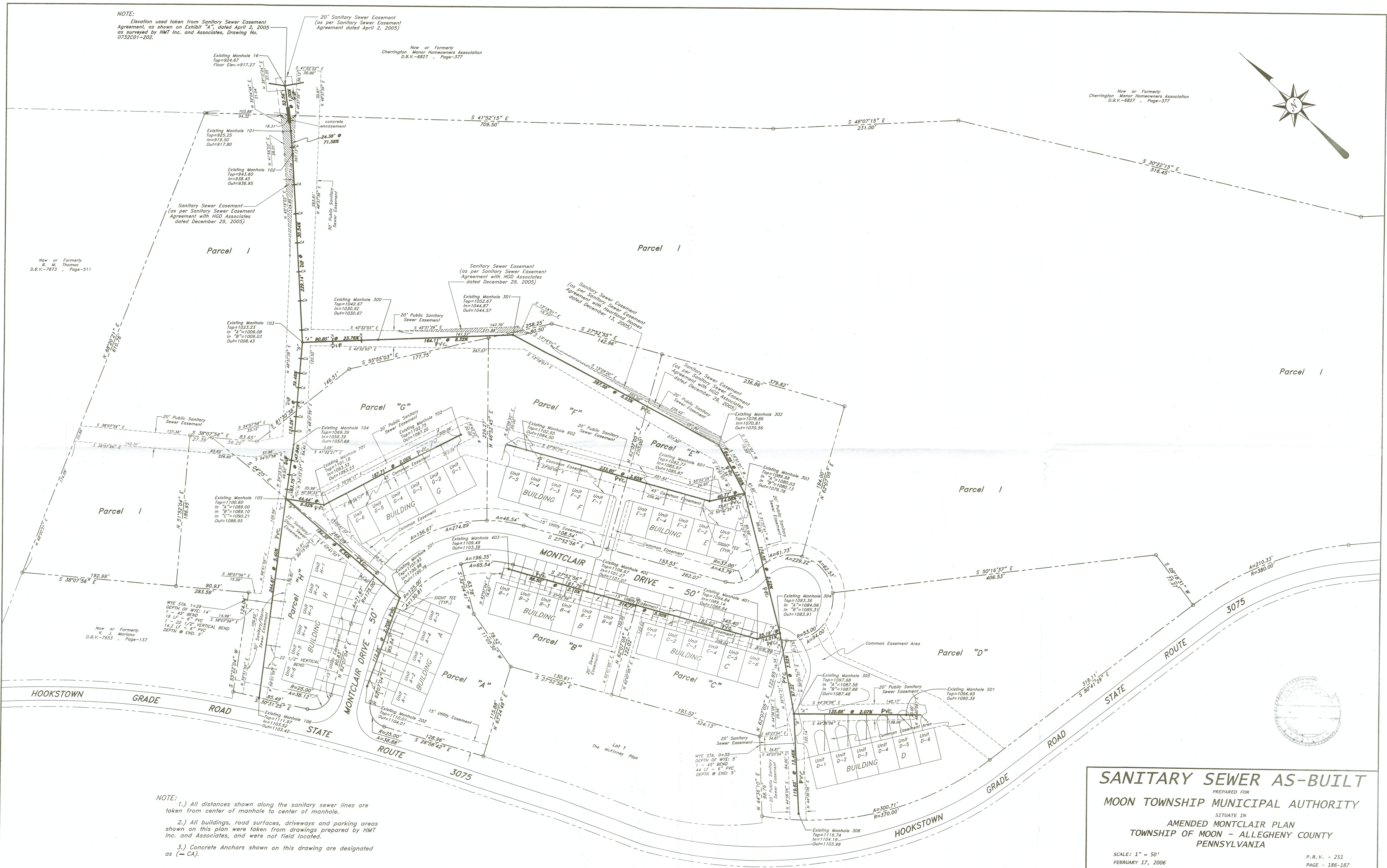
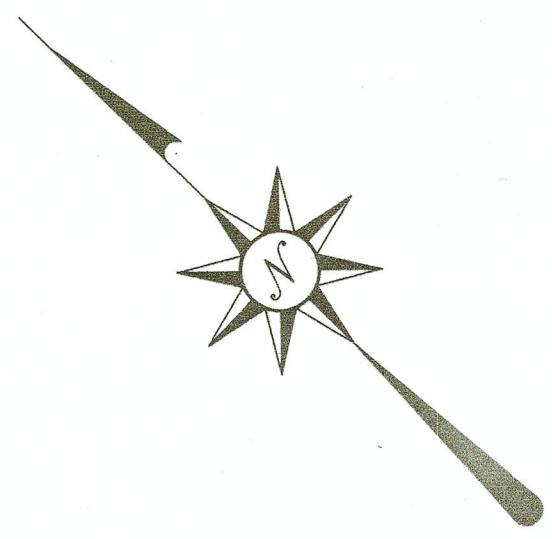


NOTE:  
Elevation used taken from Sanitary Sewer Easement Agreement, as shown on Exhibit "A", dated April 2, 2005 as surveyed by HMT Inc. and Associates, Drawing No. 0732001-202.

20' Sanitary Sewer Easement  
(as per Sanitary Sewer Easement Agreement dated April 2, 2005)

Now or Formerly  
Cherrington Manor Homeowners Association  
D.B.V.-6827 Page-377

Now or Formerly  
Cherrington Manor Homeowners Association  
D.B.V.-6827 Page-377



- NOTE:
- 1.) All distances shown along the sanitary sewer lines are taken from center of manhole to center of manhole.
  - 2.) All buildings, road surfaces, driveways and parking areas shown on this plan were taken from drawings prepared by HMT Inc. and Associates, and were not field located.
  - 3.) Concrete Anchors shown on this drawing are designated as (- CA).

**SANITARY SEWER AS-BUILT**  
PREPARED FOR  
**MOON TOWNSHIP MUNICIPAL AUTHORITY**  
SITUATE IN  
**AMENDED MONTCLAIR PLAN**  
**TOWNSHIP OF MOON - ALLEGHENY COUNTY**  
**PENNSYLVANIA**

SCALE: 1" = 50'  
FEBRUARY 17, 2006

JAMES R. DEGLAU - REGISTERED SURVEYOR - REGISTRATION NO. 7774 - E  
3001 JACKS RUN ROAD - EMPIRE BLDG., SUITE ONE - MCKEESPORT, PA. 15131 - PHONE: (412) 678 - 4403

DRAWN BY: FR  
CHECKED BY: JRD

REVISIONS  
(1.) AUGUST 23, 2006

SHEET 1 of 5

E-1325